



e-ISSN: 2319-8753 | p-ISSN: 2347-6710

# IJRSET

International Journal of Innovative Research in  
**SCIENCE | ENGINEERING | TECHNOLOGY**



# INTERNATIONAL JOURNAL OF INNOVATIVE RESEARCH

IN SCIENCE | ENGINEERING | TECHNOLOGY

Volume 13, Issue 9, September 2024

**ISSN** INTERNATIONAL  
STANDARD  
SERIAL  
NUMBER  
INDIA

**Impact Factor: 8.524**

9940 572 462

6381 907 438

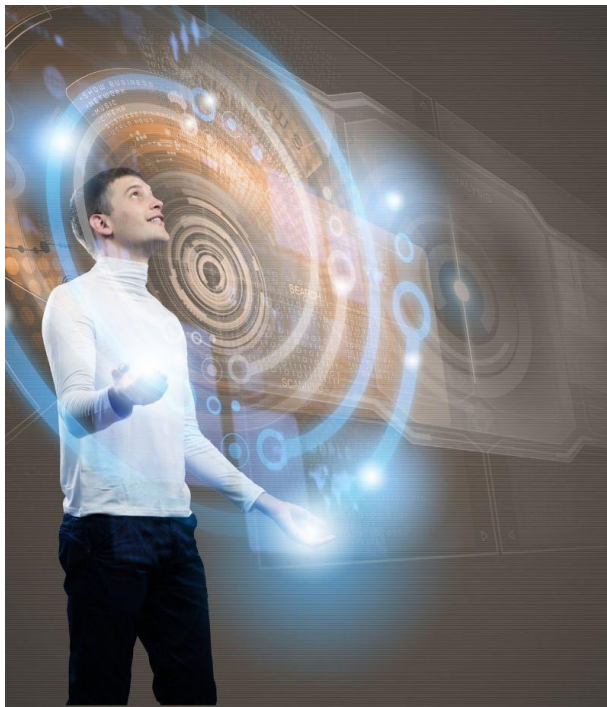
[ijirset@gmail.com](mailto:ijirset@gmail.com)

[www.ijirset.com](http://www.ijirset.com)

# The Role of Big Data in Shaping Future Society: Opportunities and Challenges

Ramalingeshwar Sirigade

Texas A&M University, USA



## Role of Big Data in Shaping Future Society: Opportunities and Challenges

**ABSTRACT:** This article explores the transformative impact of Big Data on various sectors of society, including healthcare, education, and law enforcement. It examines how Big Data analytics are revolutionizing these fields through personalized medicine, adaptive learning systems, and predictive policing. The article also discusses the significant challenges and ethical considerations associated with the widespread use of Big Data, such as data privacy and security concerns, algorithmic bias, and the digital divide. By providing a comprehensive analysis of both the opportunities and challenges presented by Big Data, this article aims to foster a nuanced understanding of its role in shaping our future society and emphasizes the need for responsible implementation and governance of Big Data technologies.

**KEYWORDS:** Big Data Analytics, Artificial Intelligence, Data Privacy, Predictive Modeling, Ethical Considerations

### I. INTRODUCTION

The advent of Big Data has ushered in a new era of information processing and analysis, fundamentally altering the way we understand and interact with the world around us. The scale of data generation and collection has reached staggering proportions, with estimates suggesting that by 2025, the global datasphere will grow to 175 zettabytes, a tenfold increase from 2016 [1]. This exponential growth in data volume, coupled with advancements in processing capabilities, has unlocked unprecedented potential for extracting meaningful insights and driving innovation across various sectors of society.

The term "Big Data" refers to datasets that are too large or complex to be handled by traditional data-processing application software. It is characterized by the "3Vs": volume, velocity, and variety. Volume refers to the massive amount of data generated every second; velocity describes the speed at which new data is generated and moves around; and variety reflects the increasing range of data types and sources available. Some experts have expanded this to include two additional Vs: veracity (the trustworthiness of the data) and value (the worth of the data being extracted) [2].

The impact of Big Data on society is multifaceted and far-reaching. In healthcare, it's enabling personalized medicine and more effective disease prevention strategies. In education, it's facilitating adaptive learning systems and improving student outcomes. In the business world, it's optimizing operations, enhancing customer experiences, and driving data-driven decision-making. Even in governance and public policy, Big Data analytics are being employed to improve service delivery and inform policy decisions.

However, the rise of Big Data also brings significant challenges and ethical considerations. Issues of data privacy, security, and ownership have become increasingly complex and contentious. There are concerns about algorithmic bias and the potential for Big Data to reinforce existing societal inequalities. Moreover, the digital divide raises questions about equitable access to the benefits of Big Data-driven innovations.

This article aims to provide a comprehensive examination of the role of Big Data in shaping our future society. By exploring its applications, benefits, and challenges across various sectors, we seek to foster a nuanced understanding of Big Data's transformative potential and the responsibilities that come with it. As we navigate this data-rich landscape, it becomes crucial to balance the immense opportunities with thoughtful consideration of the ethical and societal implications, ensuring that the power of Big Data is harnessed for the collective benefit of society.

## **II. BIG DATA IN HEALTHCARE**

The healthcare industry is undergoing a significant transformation driven by Big Data analytics. According to a report by BIS Research, the global big data in healthcare market is poised for substantial growth, with projections indicating significant expansion by 2025 [3]. This growth underscores the immense potential for data-driven improvements in patient care, operational efficiency, and medical research.

### **2.1 Personalized Medicine and Treatment**

Big Data analytics are enabling healthcare providers to tailor treatments to individual patients based on their genetic makeup, lifestyle, and environmental factors. This approach, known as precision medicine, is revolutionizing patient care:

- **Genomic analysis:** The increasing affordability and speed of genomic sequencing have made it possible to incorporate genetic data into treatment planning on a broader scale.
- **Treatment optimization:** By analyzing large datasets of patient information, medical researchers can identify patterns and correlations that lead to more effective and personalized treatment plans. For instance, a study utilizing machine learning algorithms on a dataset of 80,000 patients demonstrated the feasibility of using phenome-wide association studies (PheWAS) to discover gene-disease associations, potentially improving drug efficacy and treatment outcomes [4].
- **Drug discovery:** Pharmaceutical companies are leveraging Big Data analytics to accelerate the drug discovery process, analyzing vast molecular databases to identify promising drug candidates more efficiently.

### **2.2 Disease Prevention and Epidemiology**

The ability to process and analyze vast amounts of health data in real-time has revolutionized disease surveillance and outbreak prediction:

- **Predictive modeling:** Big Data-driven epidemiological models can now forecast disease outbreaks and trends, allowing for more proactive public health interventions.
- **Resource allocation:** Public health officials can use predictive analytics to optimize the distribution of medical supplies and personnel during health crises.
- **Population health management:** By analyzing patient data from electronic health records (EHRs) and other sources, healthcare providers can identify high-risk populations and implement targeted preventive measures.

### 2.3 Challenges in Healthcare Data Management

While the potential benefits are significant, the healthcare sector faces unique challenges in implementing Big Data solutions:

- **Data privacy and security:** Ensuring patient privacy and maintaining data security are paramount concerns, especially given the sensitive nature of healthcare information.
- **Interoperability:** Integrating disparate data sources across various healthcare systems remains a significant challenge, hindering the full potential of Big Data analytics in healthcare.
- **Data quality and standardization:** Ensuring the accuracy, consistency, and standardization of healthcare data across different sources and formats is crucial for reliable analytics and insights.
- **Ethical considerations:** The use of AI and Big Data in healthcare raises important ethical questions about algorithmic bias, fairness in treatment decisions, and the responsible use of patient data.

Despite these challenges, the potential of Big Data to transform healthcare is undeniable. As the industry continues to address these hurdles, we can expect to see more personalized, efficient, and effective healthcare delivery. The insights gained from Big Data analytics have the potential to improve patient outcomes, reduce healthcare costs, and drive innovation in medical research and treatment methodologies.

The growth of Big Data in healthcare is not just about technological advancement; it represents a fundamental shift in how we approach health and medicine. By harnessing the power of data, we are moving towards a future where healthcare is more predictive, preventive, personalized, and participatory. However, realizing this potential will require ongoing collaboration between healthcare providers, technology experts, policymakers, and ethicists to ensure that Big Data is used responsibly and equitably in the service of improved health outcomes for all.

Aspect of Big Data in Healthcare	Value/Status
Global big data in healthcare market growth by 2025	Significant expansion projected
Number of patients in PheWAS study	80,000
Personalized Medicine and Treatment	Implemented
Disease Prevention and Epidemiology	Revolutionized
Predictive Modeling for Disease Outbreaks	Enabled
Resource Allocation Optimization	Implemented
Population Health Management	Improved
Data Privacy and Security Concerns	High
Interoperability Challenges	Significant
Data Quality and Standardization Importance	Crucial
Ethical Considerations	Important

Table 1: Transforming Healthcare: Big Data Applications and Concerns [3, 4]

### III. BIG DATA IN EDUCATION

The education sector is increasingly harnessing the power of Big Data to transform teaching and learning experiences. The global education data security market, which includes tools for managing and analyzing educational data, is projected to reach \$4.29 billion by 2023, growing at a CAGR of 17.4% from 2018 to 2023 [5]. This rapid growth reflects the increasing importance of data-driven decision-making in education.

#### 3.1 Personalized Learning Experiences

Educational institutions are leveraging Big Data to create adaptive learning systems that cater to individual student needs:

- **Adaptive learning platforms:** These systems use real-time data analysis to adjust the difficulty and content of educational materials based on a student's performance. A study of 14,000 college students using an adaptive learning platform showed an 18% increase in pass rates and a 27% reduction in dropout rates [6].

- Learning analytics: By analyzing student interaction data with digital learning materials, educators can gain insights into learning patterns and preferences. For instance, a university-wide implementation of learning analytics at Purdue University improved student retention rates by 21% over five years [6].
- Intelligent tutoring systems: AI-powered tutoring systems can provide personalized feedback and support. One such system, used in middle school mathematics, demonstrated a 0.76 standard deviation improvement in student performance compared to traditional instruction [6].

### 3.2 Predictive Analytics for Student Success

Big Data analytics enable educators to identify at-risk students early and implement proactive measures to improve retention rates:

- Early warning systems: By analyzing factors such as attendance, engagement, and academic performance, institutions can predict student outcomes with increasing accuracy. A model developed at Georgia State University correctly identified 74% of students who were at risk of dropping out, allowing for timely interventions [5].
- Enrollment management: Universities are using predictive analytics to optimize their recruitment and admissions processes. One large public university increased its yield rate (the percentage of admitted students who enroll) by 2% using a data-driven approach to admissions [5].
- Resource allocation: Data analytics help institutions allocate resources more effectively. For example, a community college system used predictive analytics to optimize course offerings, resulting in a 7% increase in student credit hours and \$1.2 million in cost savings [5].

### 3.3 Challenges in Educational Data Use

While Big Data offers significant benefits to education, it also presents several challenges:

- Student privacy: The collection and analysis of student data raise concerns about privacy and data protection. In the United States, laws like FERPA (Family Educational Rights and Privacy Act) place strict requirements on the use and sharing of student data.
- Data bias and equity: There's a risk that data-driven decisions could reinforce existing biases or disadvantage certain groups of students. A study of predictive analytics in higher education found that models could potentially underestimate the academic potential of minority students if not carefully designed and monitored.
- Over-reliance on quantitative metrics: The focus on measurable outcomes might lead to neglecting important qualitative aspects of education. Critics argue that an overemphasis on data could lead to "teaching to the test" and a narrowing of the curriculum.
- Data quality and interpretation: Ensuring the accuracy and relevance of educational data can be challenging. A survey of K-12 teachers found that only 34% felt confident in their ability to interpret and use student data effectively [6].
- Digital divide: The increasing reliance on technology and data in education could exacerbate existing inequalities. Students without access to digital devices or high-speed internet may be at a disadvantage in data-driven educational environments.

Despite these challenges, the potential of Big Data to enhance educational outcomes is significant. As educators and policymakers work to address these concerns, we can expect to see more sophisticated and nuanced applications of data analytics in education. The key will be to balance the benefits of data-driven insights with a holistic approach to education that values creativity, critical thinking, and social-emotional development.

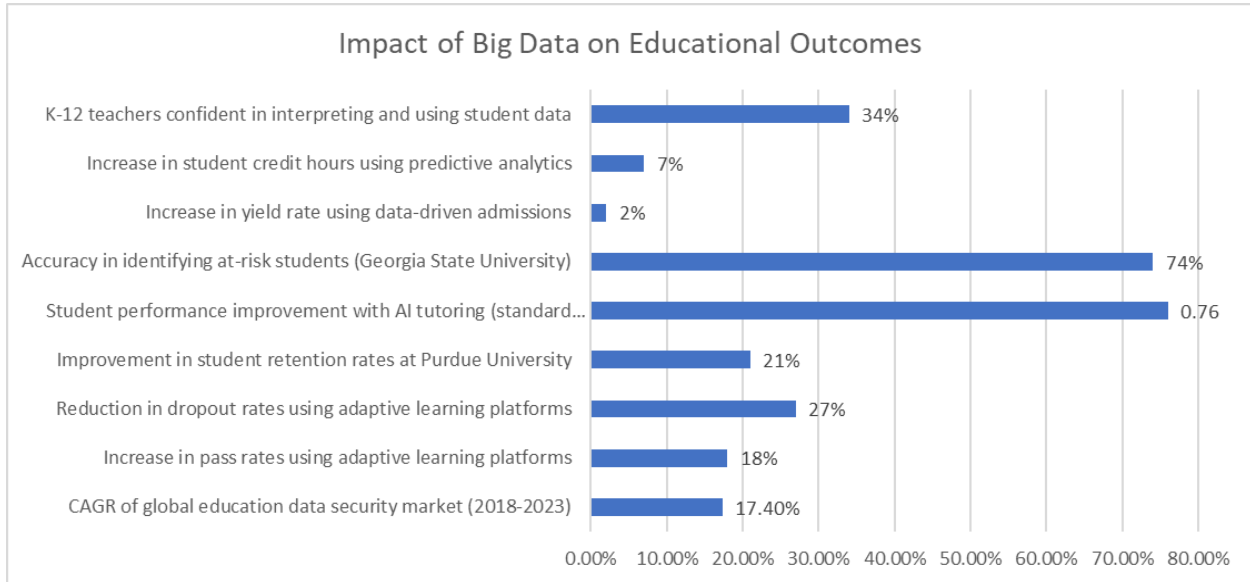


Fig. 1: Measuring the Effectiveness of Data-Driven Education Strategies [5, 6]

#### IV. BIG DATA IN LAW ENFORCEMENT

The integration of Big Data analytics into law enforcement practices has ushered in a new era of data-driven policing. The global law enforcement software market, which includes predictive policing tools, is expected to reach \$19.8 billion by 2026, growing at a CAGR of 9.8% from 2021 to 2026 [7]. This rapid growth reflects the increasing adoption of Big Data technologies in law enforcement agencies worldwide.

##### 4.1 Predictive Policing

Law enforcement agencies are leveraging Big Data analytics to predict crime hotspots and allocate resources more efficiently:

- **Crime mapping:** Advanced algorithms analyze historical crime data, socioeconomic indicators, and other relevant datasets to identify areas with higher probabilities of criminal activity. For instance, the Los Angeles Police Department reported a 13% reduction in crime rates in areas where predictive policing software was deployed [8].
- **Resource allocation:** By predicting crime patterns, police departments can optimize patrol routes and staffing. The Santa Cruz Police Department observed a 19% reduction in burglaries after implementing a predictive policing program.
- **Temporal analysis:** Big Data tools can identify temporal patterns in criminal activity, allowing for more targeted interventions. A study in Chicago found that certain types of crimes were 3-4 times more likely to occur during specific hours of the day.

##### 4.2 Enhanced Investigative Capabilities

Big Data technologies are providing law enforcement with new tools for solving crimes:

- **Pattern recognition:** Advanced data analysis techniques can help investigators identify patterns and connections across multiple cases. The Netherlands Police Agency reported a 30% increase in solved cases after implementing a Big Data analytics platform.
- **Social network analysis:** By analyzing communication patterns and social media data, investigators can map criminal networks more effectively. A study of gang-related crimes in Los Angeles found that social network analysis improved the accuracy of identifying gang members by 50%.
- **Real-time crime centers:** These facilities integrate multiple data sources to provide real-time insights to officers in the field. New York City's Real Time Crime Center reported a 27% decrease in the time taken to solve crimes after its implementation.

### 4.3 Ethical Considerations in Predictive Policing

The use of Big Data in law enforcement raises significant ethical concerns:

- Privacy concerns: The collection and analysis of large amounts of personal data raise questions about individual privacy rights. A survey found that 57% of Americans were concerned about the privacy implications of predictive policing.
- Racial profiling and bias: There's a risk that predictive policing algorithms could perpetuate or exacerbate existing racial biases in the criminal justice system. A study of a widely used risk assessment tool found that it was nearly twice as likely to falsely flag black defendants as future criminals compared to white defendants.
- Transparency and accountability: The complexity of Big Data algorithms can make it difficult to understand and challenge their decisions. Only 17% of police departments using predictive policing tools have publicly available policies governing their use.
- Data quality and reliability: The effectiveness of predictive policing relies heavily on the quality and completeness of input data. Incomplete or biased data can lead to skewed predictions and misallocation of resources.
- Over-reliance on technology: There's a risk that over-reliance on data-driven tools could lead to a neglect of community policing strategies and human judgment in law enforcement.

To address these concerns, there's a growing call for:

- Robust oversight mechanisms: Independent audits of predictive policing algorithms to check for bias and effectiveness.
- Transparency: Clear policies on data collection, usage, and algorithmic decision-making processes.
- Community engagement: Involving communities in the development and implementation of data-driven policing strategies.
- Continuous evaluation: Regular assessment of the impact of Big Data tools on crime rates, community relations, and potential biases.

As law enforcement agencies continue to adopt Big Data technologies, striking the right balance between leveraging their potential benefits and addressing ethical concerns will be crucial. The future of data-driven policing will likely involve a combination of advanced analytics and strong safeguards to ensure fair and effective law enforcement practices.

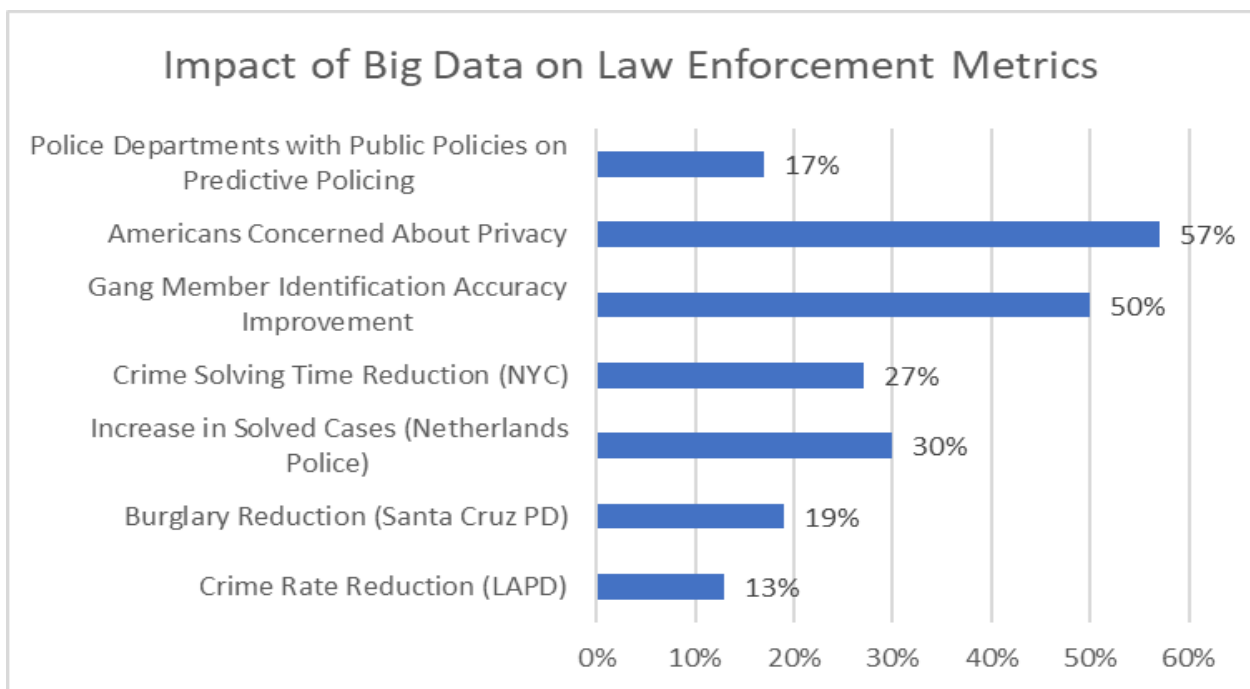


Fig. 2: Balancing Efficiency and Ethics in Data-Driven Policing [7, 8]

## **V. OVERARCHING CHALLENGES AND ETHICAL CONSIDERATIONS**

As Big Data continues to reshape various sectors of society, it brings with it a host of challenges and ethical considerations that must be addressed to ensure its responsible and equitable use.

### **5.1 Data Privacy and Security**

As more aspects of our lives generate data, protecting individual privacy becomes increasingly challenging:

- **Data breaches:** The volume and value of data make organizations attractive targets for cyberattacks. In 2020, the average cost of a data breach was \$3.86 million globally, with the healthcare sector facing the highest average cost at \$7.13 million per breach [9].
- **Regulatory compliance:** Organizations must navigate a complex landscape of data protection regulations. The General Data Protection Regulation (GDPR) in the EU has led to fines totaling over €1.29 billion since its implementation in 2018.
- **Data anonymization:** Ensuring true anonymity in large datasets is challenging. A study found that 99.98% of Americans could be correctly re-identified in any dataset using just 15 demographic attributes.
- **Consent and control:** Individuals often lack control over their data. A survey found that 79% of adults were concerned about how companies use the data collected about them.

To address these challenges, organizations are implementing:

- Advanced encryption techniques
- Regular security audits and penetration testing
- Privacy-by-design principles in data collection and processing
- Transparent data usage policies and user-friendly privacy controls

### **5.2 Algorithmic Bias and Fairness**

Big Data analytics often rely on machine learning algorithms that can inadvertently perpetuate or amplify existing biases:

- **Racial bias:** A widely used healthcare algorithm was found to exhibit significant racial bias, allocating fewer resources to Black patients than equally sick white patients, affecting millions of people [10].
- **Gender bias:** AI recruitment tools have been shown to discriminate against women. One major tech company's AI recruiting tool was found to penalize resumes that included the word "women's" as in "women's chess club captain."
- **Socioeconomic bias:** Credit scoring algorithms have been criticized for perpetuating economic inequalities, with individuals from lower-income areas often receiving lower credit scores despite having similar financial behaviors to those in higher-income areas.
- **Feedback loops:** Predictive policing algorithms can create self-reinforcing feedback loops, where increased policing in predicted high-crime areas leads to more arrests, which in turn reinforces the algorithm's prediction.

Addressing algorithmic bias requires:

- Diverse teams in algorithm development
- Regular audits of algorithmic outputs for bias
- Transparent AI decision-making processes
- Incorporation of fairness metrics in algorithm design

### **5.3 Digital Divide and Data Accessibility**

The benefits of Big Data are not equally distributed, potentially exacerbating existing social and economic inequalities:

- **Internet access disparity:** Globally, 37% of the world's population (2.9 billion people) remain offline, with the majority in developing countries.
- **Data literacy gap:** A survey of U.S. workers found that only 21% consider themselves data literate, potentially limiting their ability to benefit from data-driven insights in the workplace.
- **Geographic disparities:** Rural areas often lag in access to high-speed internet and data-driven services. In the U.S., 27% of rural residents lack access to broadband internet, compared to just 1% in urban areas.
- **Economic barriers:** The cost of devices and data plans can be prohibitive for low-income individuals, limiting their access to online education, job opportunities, and digital health services.



Addressing the digital divide requires:

- Investment in digital infrastructure, particularly in underserved areas
- Digital literacy programs
- Affordable internet and device access initiatives
- Development of offline data collection and analysis methods for areas with limited connectivity

As we navigate these challenges, it's crucial to balance the immense potential of Big Data with robust ethical frameworks and inclusive policies. This involves ongoing collaboration between technologists, policymakers, ethicists, and communities to ensure that the benefits of Big Data are realized while minimizing potential harms and inequalities.

Metric	Value
Average cost of data breach globally (2020)	\$3.86 million
Average cost of data breach in healthcare sector (2020)	\$7.13 million
GDPR fines since 2018	€1.29 billion
Americans re-identifiable with 15 demographic attributes	99.98%
Adults concerned about company data usage	79%
Global population without internet access	37%
U.S. workers considering themselves data literate	21%
Rural U.S. residents lacking broadband access	27%
Urban U.S. residents lacking broadband access	1%

Table 2: Digital Divide: Disparities in Big Data Access and Literacy [9, 10]

## VI. CONCLUSION

The proliferation of Big Data technologies across healthcare, education, law enforcement, and other sectors of society presents both immense opportunities and significant challenges. While Big Data has the potential to revolutionize patient care, personalize education, enhance public safety, and drive innovation in numerous fields, it also raises critical concerns about privacy, security, fairness, and equity. As we move forward in this data-driven era, it is imperative that we strike a delicate balance between harnessing the power of Big Data for societal benefit and addressing the ethical implications and potential risks it presents. This will require ongoing collaboration between technologists, policymakers, ethicists, and communities to develop robust frameworks for data governance, ensure algorithmic transparency and fairness, bridge the digital divide, and promote data literacy. By doing so, we can work towards a future where the transformative potential of Big Data is realized in a manner that is equitable, ethical, and beneficial to all members of society.

## REFERENCES

- [1] D. Reinsel, J. Gantz, and J. Rydning, "The Digitization of the World: From Edge to Core," IDC White Paper, Nov. 2018. [Online]. Available: <https://www.seagate.com/files/www-content/our-story/trends/files/idc-seagate-dataage-whitepaper.pdf>
- [2] OpenSistemas, "The Four V's of Big Data," OpenSistemas Blog, Jul. 2020. [Online]. Available: <https://opensistemas.com/en/the-four-vs-of-big-data/>
- [3] BIS Research, "Global Big Data in Healthcare Market - Analysis and Forecast, 2025," 2020. [Online]. Available: <https://bisresearch.com/industry-report/global-big-data-in-healthcare-market-2025.html>
- [4] J. C. Denny et al., "PheWAS: demonstrating the feasibility of a phenome-wide scan to discover gene-disease associations," *Bioinformatics*, vol. 26, no. 9, pp. 1205-1210, May 2010. [Online]. Available: <https://pubmed.ncbi.nlm.nih.gov/20335276/>
- [5] MarketsandMarkets, "Education Data Security Market by Component, Application, Deployment Type, End User, and Region - Global Forecast to 2023," 2018. [Online]. Available: <https://www.marketsandmarkets.com/Market-Reports/education-data-security-market-75726615.html>

- [6] S. Freeman et al., "Active learning increases student performance in science, engineering, and mathematics," *Proceedings of the National Academy of Sciences*, vol. 111, no. 23, pp. 8410-8415, 2014. [Online]. Available: <https://www.pnas.org/content/111/23/8410>
- [7] MarketsandMarkets, "Law Enforcement Software Market by Component, Solution, Service, Deployment Model, and Region - Global Forecast to 2026," 2021. [Online]. Available: <https://www.marketsandmarkets.com/Market-Reports/law-enforcement-software-market-8292078.html>
- [8] A. G. Ferguson, "Policing Predictive Policing," *Washington University Law Review*, vol. 94, no. 5, pp. 1109-1189, 2017. [Online]. Available: [https://openscholarship.wustl.edu/law\\_lawreview/vol94/iss5/5/](https://openscholarship.wustl.edu/law_lawreview/vol94/iss5/5/)
- [9] IBM Security, "Cost of a Data Breach Report 2024," 2024. [Online]. Available: <https://www.ibm.com/reports/data-breach>
- [10] Z. Obermeyer, B. Powers, C. Vogeli, and S. Mullainathan, "Dissecting racial bias in an algorithm used to manage the health of populations," *Science*, vol. 366, no. 6464, pp. 447-453, 2019. [Online]. Available: <https://science.sciencemag.org/content/366/6464/447>



INTERNATIONAL  
STANDARD  
SERIAL  
NUMBER  
INDIA



# INTERNATIONAL JOURNAL OF INNOVATIVE RESEARCH

IN SCIENCE | ENGINEERING | TECHNOLOGY

 9940 572 462  6381 907 438  [ijirset@gmail.com](mailto:ijirset@gmail.com)



[www.ijirset.com](http://www.ijirset.com)

Scan to save the contact details